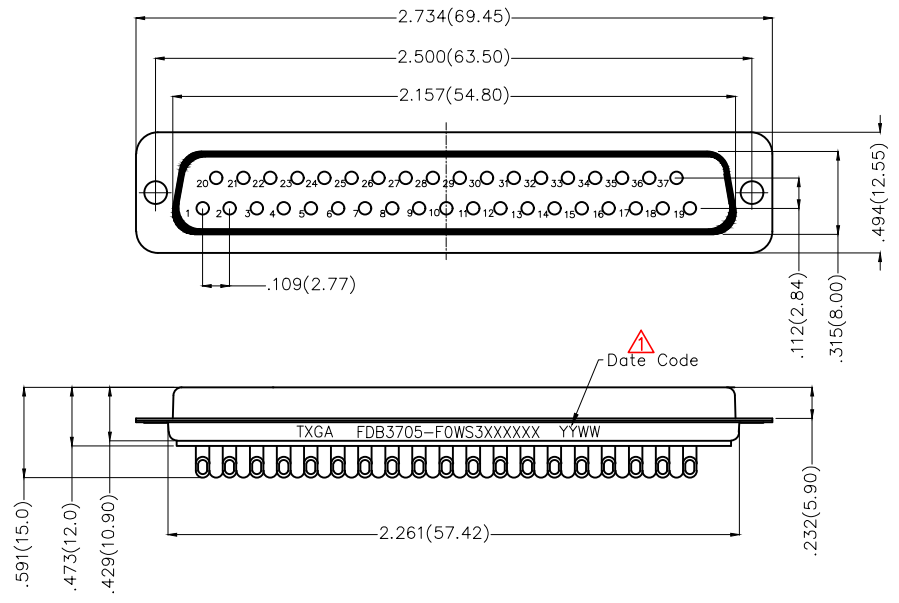


1 2 3 4 5 6 7 8

REV	LOCATIONS	DESCRIPTION	DATE	REVISER	APPD
1		Add marking code	13/Jan/25	NICK	LEO

Products Categories: A.B.C.D.E.F

Part No.: FDB3705-F0WS3XXXXXA TRADIONAL A Type	Part No.: FDB3705-F0WS3XXXXXC BACK NUT H=0.157in(4.0mm) C Type	Part No.: FDB3705-F0WS3XXXXXE BACK NUT H=0.228in(5.8mm) E Type
Part No.: FDB3705-F0WS3XXXXXB FORMER NUT H=0.157in(4.0mm) B Type	Part No.: FDB3705-F0WS3XXXXXD BACK NUT H=.189in(4.8mm) D Type	Part No.: FDB3705-F0WS3XXXXXF With screws and nuts. F Type
Screw #4-40UNC .187(4.75) .465(11.80) .189(4.80)		Nut #4-40UNC .187(4.75) .157(4.00)



Ordering Information

FDB 37 05 - F0 W S 3 XX XX X X
 1 2 3 4 5 6 7 8 9 10 11

SPECIFICATIONS

- Electrical**
- Current Rating: 3A AC(rms)/DC
 - Voltage Rating: 250V AC(rms)/DC
 - Contact Resistance: 25 mΩ Max
 - Insulation Resistance: 1000 MΩ MIN
 - Withstanding Voltage: 500V AC r.m.s
 - Temperature Range-Operating: -55°C~+105°C
- Material and Finish**
- Housing: PBT UL 94V-0
 - Contact: Copper Alloy/Gold Flash Plated On Contact Area Tin Plated On Solder tails, Nickel Under Plated Over All/Gold Plated Options
 - Shell: Spcc/Nickel Plated Over All
 - Screws: Copper Alloy/Nickel Plated Over All

1 Category FDB- D-SUB	2 Circuits 37	3 Distinction No. 05	4 Type F0-Female	5 Assembly Layout W-Welding	6 Entry Angle S-Vertical
7 Plating 3-Half Gold/Tin	8 Thickness of Gold Plating 00-Gold Flash 03-3u" Custom Plate Available	9 Color-Resin K6-Black U1-Blue	10 Packaging K-Tray L-Tube	11 Products Categories A-A Type B-B Type C-C Type D-D Type E-E Type F-F Type	

 THIRD ANGLE PROJECTION	GENERAL TOLERANCES (UNLESS SPECIFIED)		APPROVE BY FRANK	DATE 28/JUN/13	PART NO. FDB3705-F0WS3XXXXX	ITEM NO. FDB3705	 Leader Of Industry	
	X.±.012(0.30)	X.±5'	CHECKED BY JACOB	DATE 28/JUN/13	TITLE D-SUB 37PIN FEMALE CONN			REV 1
	DESIGN UNITS Inch (metric)	X.X±.008(0.20)	.X±2'	DRAWN BY CHERRY	DATE 28/JUN/13	THIS DRAWING CONTAINS INFORMATION THAT IS PROPRIETARY TO TXGA INDUSTRIAL ELECTRONICS(S.Z)CO.,LTD AND SHOULD NOT BE USED WITHOUT WRITTEN PERMISSION		
	SCALE 5:1	SIZE A4	X.XX±.006(0.15)	.XX±1'	X.XXX±.004(0.10)	.XXX±0.5'		

1 2 3 4 5 6 7 8